

Label Inspections Featuring Smart AI Technology

Applied Industrial Technologies and kmV iSight Systems

AUTOMATION SOLUTIONS



From Applied®

VISION SYSTEMS

The iSight 20/20 Label Inspector inspection system utilizes 2 cameras to perform inspections of the front and rear labels on containers, boxes and flat packs. Presentation inspections include label presence, position, skew, wrinkles, tears and blisters. ID and print verifications include 2D, barcode, match code and human readable code. Integrated process controls can be used to start or stop upstream and downstream equipment.

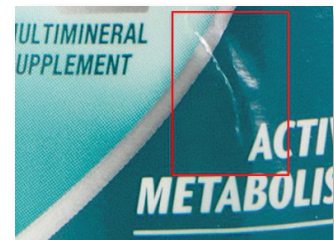
Features & Benefits:

- Installed by certified factory personnel
- Reliable and validated iSight vision suite ensures no user programming required
- Ongoing support; every 20/20 system includes remote support and secure, cloudbased backup
- Trusted partner; kmV has been engineering vision inspection solutions since 2003

Industries Served: Personal Health Care, Food & Beverage, Household Chemicals, & more.



Presence & Position



Wrinkles & Blisters



OCV & Match Code



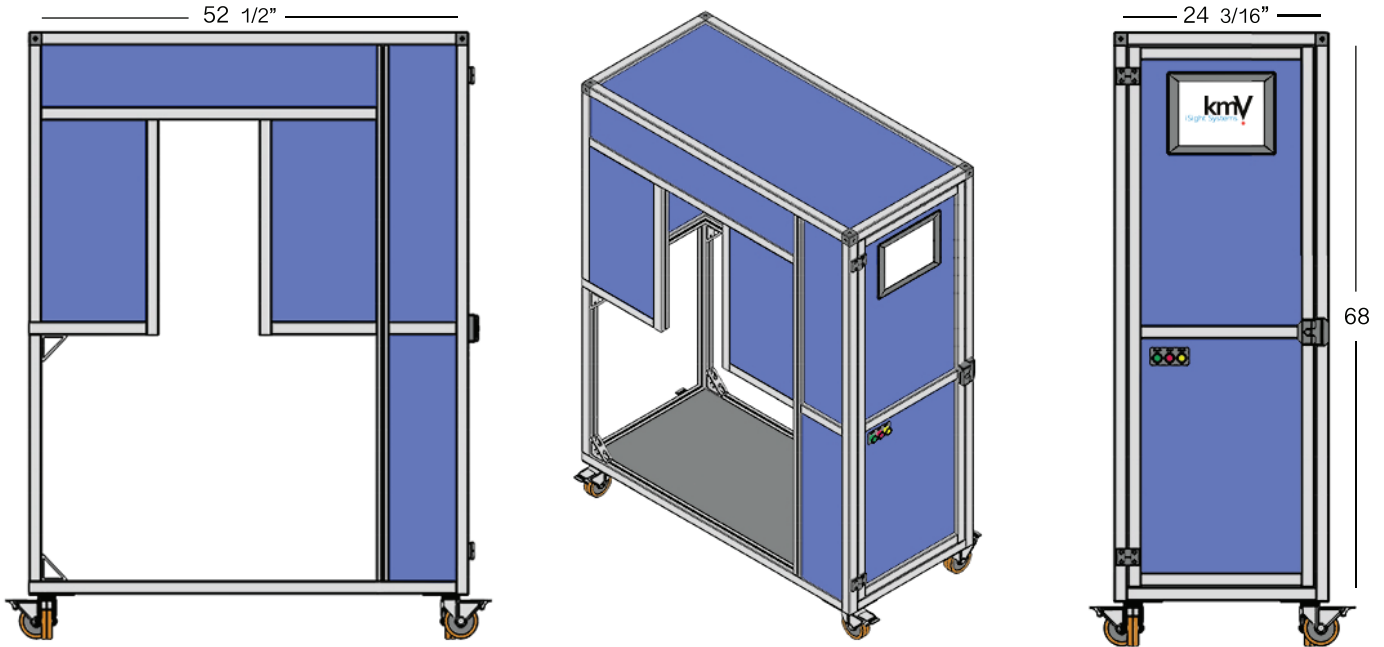
Scan to learn more about the iSight 20/20 Label Inspector.



Authorized distributor:



iSight 20/20 System Layout & Features



Feature	iSight 20/20 Label Inspector	iSight 20/20 Label Inspector+
Camera Resolution/Optics	Standard Resolution	High Resolution with AI Technology
Camera Position	Adjustable (optional)	Adjustable
Label Presentation	Presence, Position, Skew,	+ Tears, Wrinkles, Blisters, Scratches
Label ID and OCV	2D, Barcode and Unique Graphical Traits	+ Label Printed Human Readable Code
Vision Interface	15" Touch Screen	15" Touch Screen
Product Tracking	Time-Based	Time-Based (Encoder Optional)
Production Counts with Yield Tracking	✓	✓
Stack Light Notification	✓	✓
Mechanical Rejector with Reject Verify	✓	✓
Downstream Jam Alert	✓	✓
Recipe Management	✓	✓
Cloud-based Backups	✓	✓
Remote Support	✓	✓

Contact Your Local Applied® Service Center
1-877-279-2799



DISCLAIMER: The above content is provided by the supplier. Applied® does not guarantee the accuracy or timeliness of the content. The above content is provided "AS IS", AND ANY AND ALL EXPRESS AND IMPLIED WARRANTIES OF MERCHANTABILITY AND FITNESS ARE HEREBY EXCLUDED. All warranties, if any, are solely from the supplier.



Corporate Headquarters
 1 Applied Plaza
 Cleveland, Ohio 44115
 Toll Free Phone: 1-877-279-2799
Applied.com